



**Classification**

Phylum: Chlorophyta; Order: Ulvales; Family: Ulvaceae

**\*Descriptive name**

one-layered winter sea lettuce

**Features**

plants yellow-green to bright green, translucent, 100-150mm tall, **common**, shaped like a lettuce leaf, as **broad as long**, edges sometimes ruffled, thin, but firm

**Special requirements**



view the blades microscopically to find

- **one-layered** sheet of small, many-sided cells with rounded ends, **irregularly** arranged
- **short** rhizoids protruding from basal cells, anchoring plants to rocks

**Occurrences**

cosmopolitan on temperate coasts; from West Coast, S Australia to Victoria and Tasmania

**Usual Habitat**

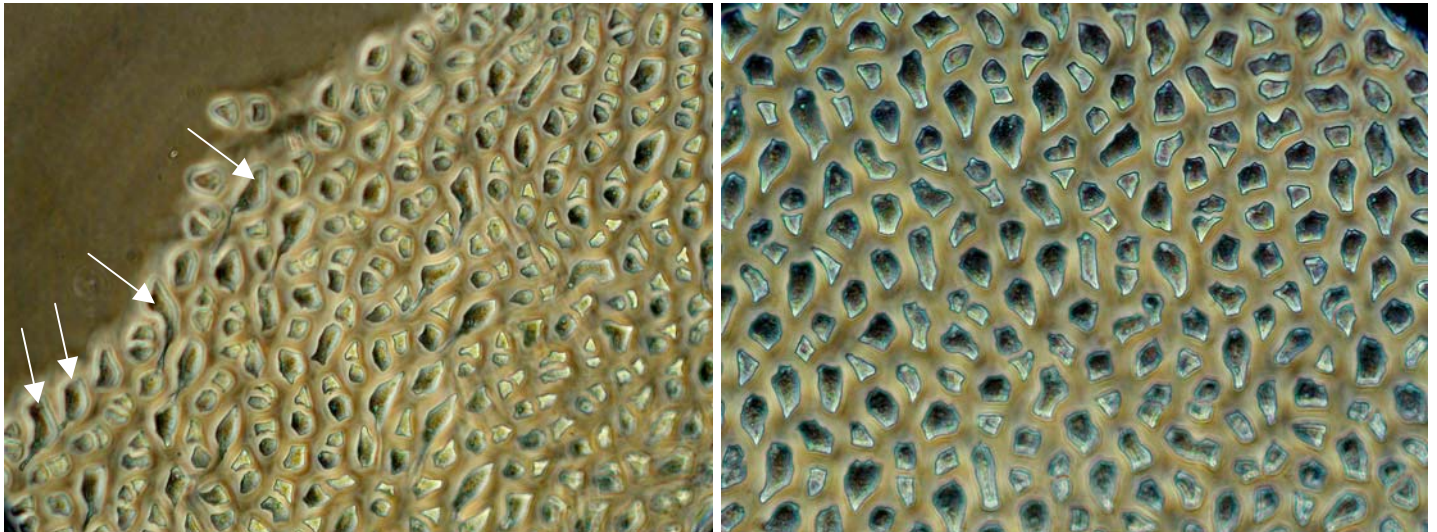
usually on rock, mainly in **winter**

**Similar Species**

*Ulva lactuca*, but that species is less common, has rows of equal-sided to elongate cells, and masses of rhizoids at the base. Microscope inspection shows *U. lactuca* has 2 cell-layers

**Description in the Benthic Flora** Part I, pages 137-139

**Details of Anatomy**



*Ulvaria oxysperma* (slide 7490) viewed under phase microscopy

1. torn edge of a blade near its base, showing cells (arrowed) with short outgrowths that act as attachment rhizoids
2. blade centre showing the single cell layer and irregularly arranged cells with straight sides (polygonal) or with rounded ends characteristic of the genus



*Ulvaria oxysperma* (Kützing) Bliding, (A31874), from Kellidie bay, Coffin Bay, S Australia, mid-intertidal on rocks