



**Techniques needed and shape**

**Classification**

Division: Rhodophyta; Family: Delesseriaceae; Tribe: Delesserioideae  
Group: *Caloglossa*

**\*Descriptive name**

Flat-bladed Turf (referring to the habit or shape)

**Features**



plants rose-grey, about 2 mm tall, forming a turf; erect parts of narrow **blades**, branched on **one side**

**Special requirements**



view microscopically to find: attachment by single celled rhizoids from a sturdy **prostrate** thread; upright, flat blades ending in 3 unbranched hairs, central thread of cells flanked by 4 equal-sized (pericentral) cells, the 2 opposite ones producing 2 outward-facing (flanking) cells widening the blade

**Occurrences**

widespread in tropical seas, extending to temperate regions

**Usual Habitat**

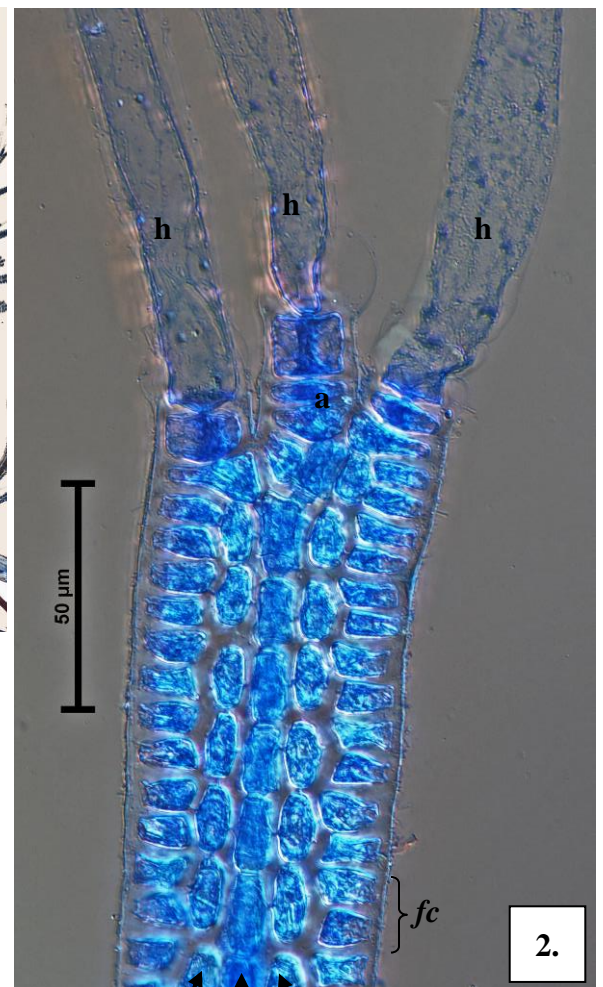
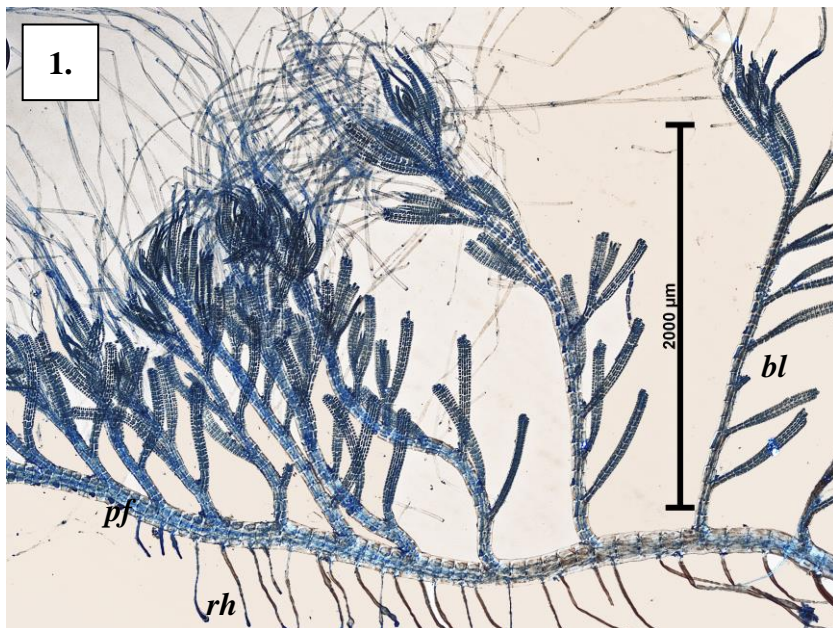
on rock, just above or below low tide, probably often overlooked because of its small size

**Similar Species**

filamentous members of the Families: Rhodomelaceae and Ceramiaceae

**Description in the Benthic Flora** Part IIID , page 20-22

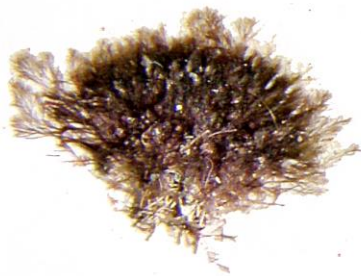
**Details of Anatomy**



*Taenioma perpusillum* stained blue and viewed microscopically (slide 17147)

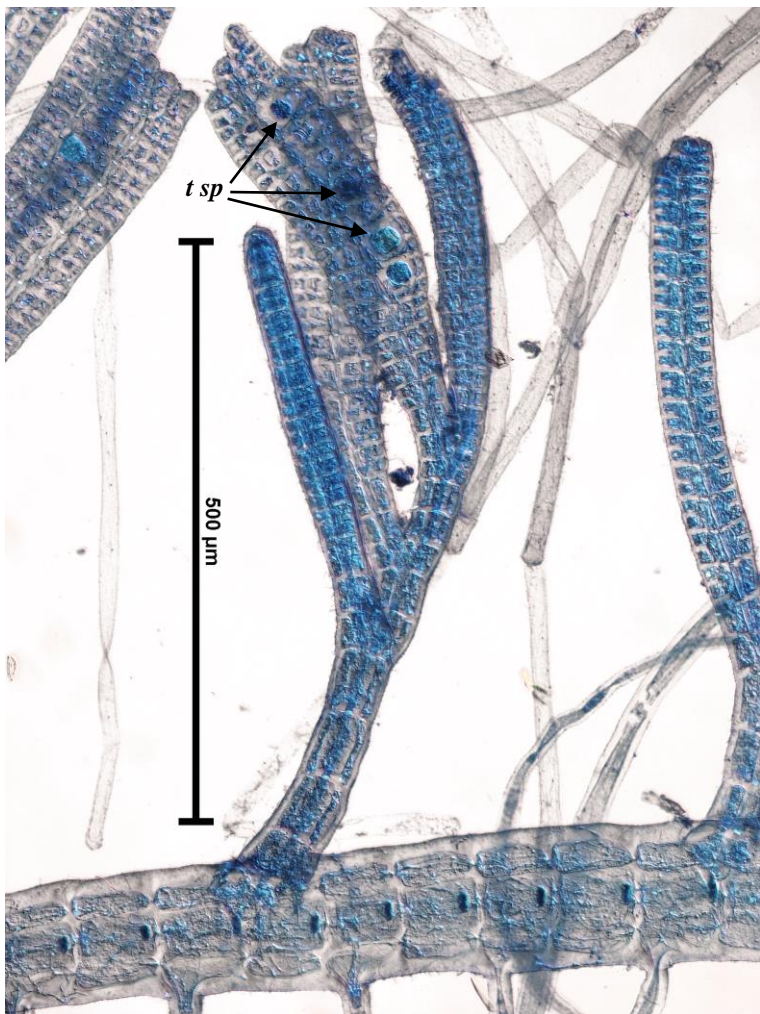
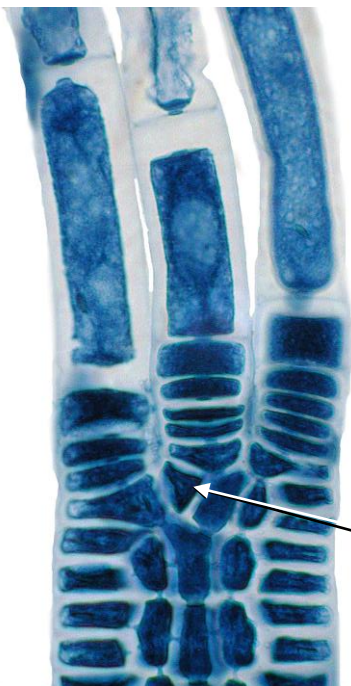
1. prostrate filament (**pf**), single-celled rhizoids (**rh**), erect, upright blades (**bl**) branched on one side
2. tip of young, erect flat fronds: hairs (**h**) arising from actively dividing apical cells (**a**), central thread (**c fil**) partly obscured by a pericentral cell (**pc**), side pericentral cells (**lpc**) producing pairs of outwardly-facing flanking cells (**fc**)

3.



4.

5.



*Taenioma perpusillum* (J Agardh) J Agardh A33837,  
 3. from shaded parts of the lower intertidal, Troubridge Point, Yorke Peninsula, S. Australia, mixed with bleached, coralline red algae  
 4. blade tip detail: apical cell (*a*) dividing alternately, producing pericentral cells and central filament cells (slide 1718)  
 5. sporangial plant: terasporangia (*t sp*) (slide 17147)