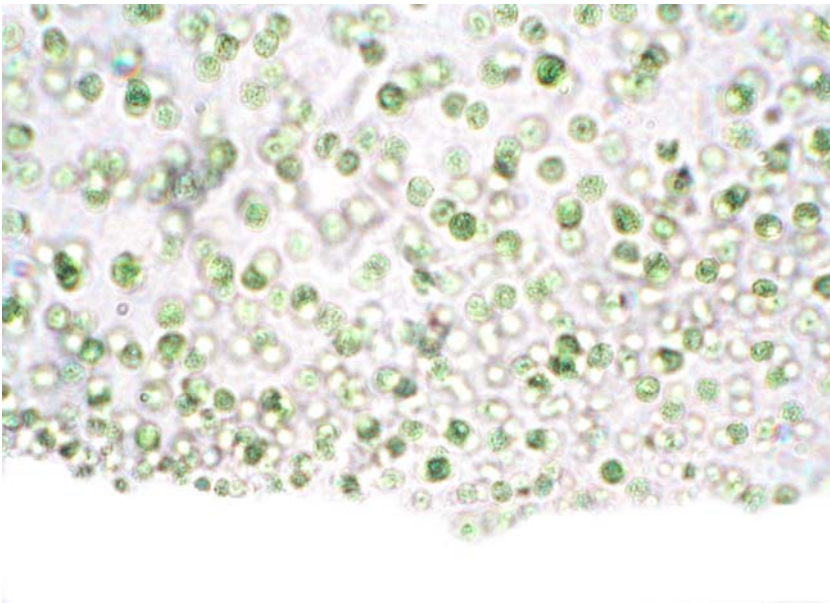


Phylum: Chlorophyta

# Family: Palmellaceae 50.050



*Palmocladus stipitatus*  
Womersley, from 34m deep,  
Pearson Island, S Australia, 22<sup>nd</sup>  
October 1991 (R N Baldock)  
100mm tall



Microscopic detail of *Palmocladus stipitatus* (similar to many members of the Family: Palmellaceae). Very small, individual cells scattered in a gelatinous matrix make up the entire internal structure of the plant.

(slide 4199)