

***Hypoglossum harveyanum***  
(J Agardh) Shepley & Womersley var.  
*fimbriatum* Womersley

45.880.00

**A SPECIES WITH FEW RECORDS**

Techniques needed and plant shape



**MACRO PLANT**



Classification

Division: Rhodophyta; Family: Delesseriaceae; Tribe: Delesserioideae  
Group: *Hypoglossum*

\*Descriptive name

narrow froned cellophane plant

Features



plants light to medium red, about 100mm tall, often of a single, narrow main, flat blade producing smaller blades from **both** sides of the **mid-line vein**, blade edges **serrated**

Special requirements

view microscopically to find:

- **single** cell at blade tips producing a thread of cells becoming a prominent mid-line **vein**, **upturned** serrations at the blade edges each ending in a single line of cells, **small blades** standing upright along the veins the prominent threads at their margins producing a **comb-like** appearance
- cystocarps (the products of fertilisation) **large** (about 1mm across) spherical at the base with a **long neck** flared at the opening

Occurrences

Usual Habitat

Similar Species

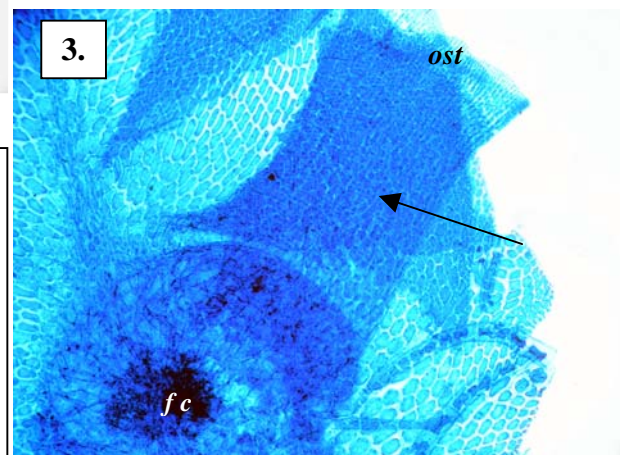
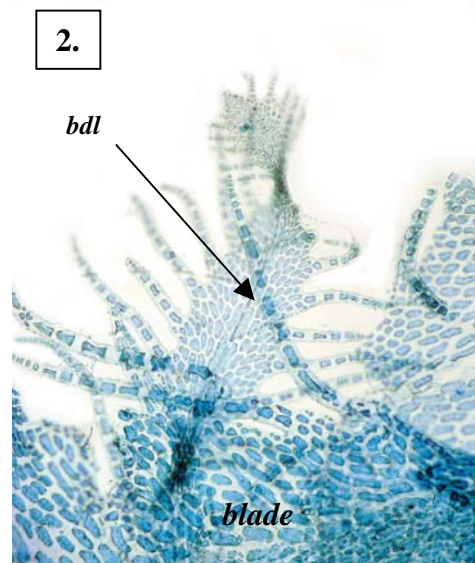
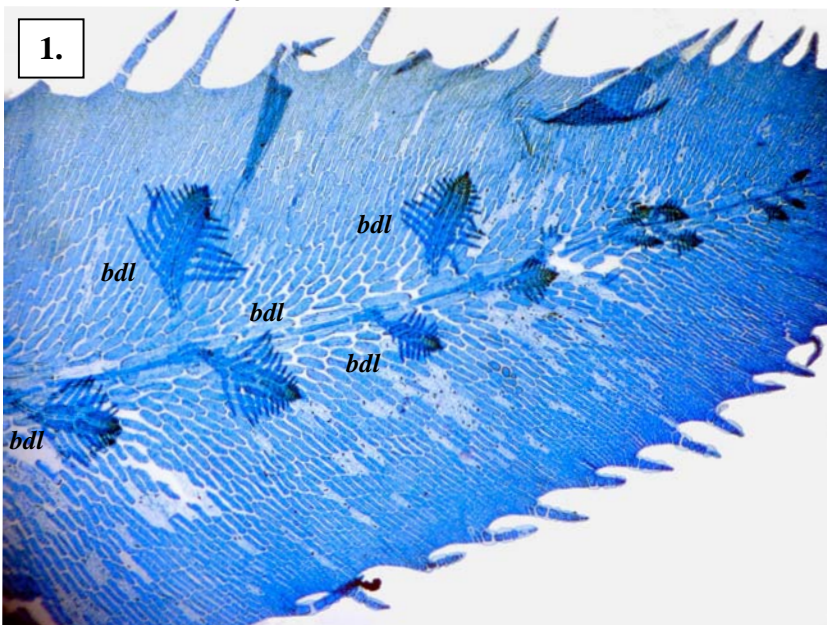


Point Turton, Yorke Peninsula and Saunders Beach Kangaroo I. S. Australia on rock and jetty piles, 3-9m deep

similar to *Hypoglossum harveyanum harveyanum* but unique in the long-necked cystocarps and the fringed, narrow blades

Description in the Benthic Flora Part IIID, pages 50-52

Details of Anatomy

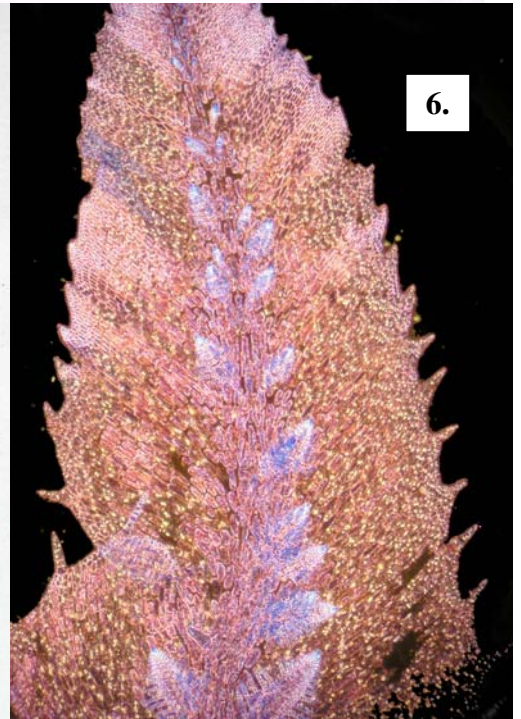
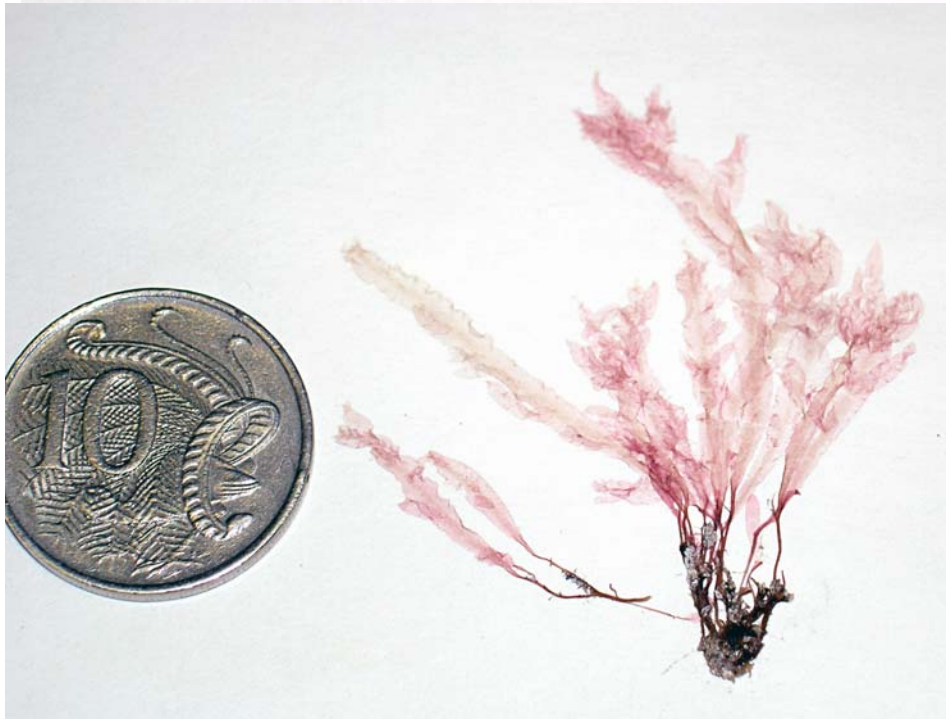


*Hypoglossum harveyanum* var. *fimbriatum* stained blue and viewed microscopically to show

1. upturned marginal serrations ending in single lines of cells and comb-like bladelets (*bdl*) arising from the mid-line vein (A33094 slide 796)
2. detail of a bladelet (A29500 slide 914)
3. surface view cystocarp (*cys*) (the product of fertilisation) with fusion cell (*fc*) inside and long neck (arrowed) flared at the opening (ostioles, *ost*) (A29500 slide 913)



4.



6.

- 4, 5. specimens of *Hypoglossum harveyanum* var *fimbriatum* (J Agardh) Womersley & Shepley from Point Turton, S Australia (#4. A44156, #5. A33094)
6. tip of a blade viewed with dark field microscopy to emphasize the serrated edges and the mid-line rows of bladelets (A33094 slide 797)