

Hypoglossum harveyanum

(J Agardh) Shepley & Womersley,
including var. *fimbriatum* Womersley

45.880

Techniques needed and shape



Classification

Division: Rhodophyta; Family: Delesseriaceae; Tribe: Delesseriodeae

Group: *Hypoglossum*

*Descriptive name

Flaming Cellophane Plant (referring to the many tongue-like red bladelets)

Features

1. plants 100-400mm tall, light to medium red, often with a single main branch (axis) and several smaller ones, **densely branched** with narrow, pointed blades and smaller bladelets **1 cell thick** except at the veins
2. blades & bladelets narrow and pointed arise from the **both sides** of the midline vein, edges **serrated** with minute upturned teeth

Variations

the variety *fimbriatum* has short threads extending from blade edges

Special requirements

view microscopically:

1. the single apical cell giving rise to a filament of cells becoming a prominent mid-line vein when thickened (corticated)
2. minute upturned teeth at the edge of the blades and bladelets

Occurrences

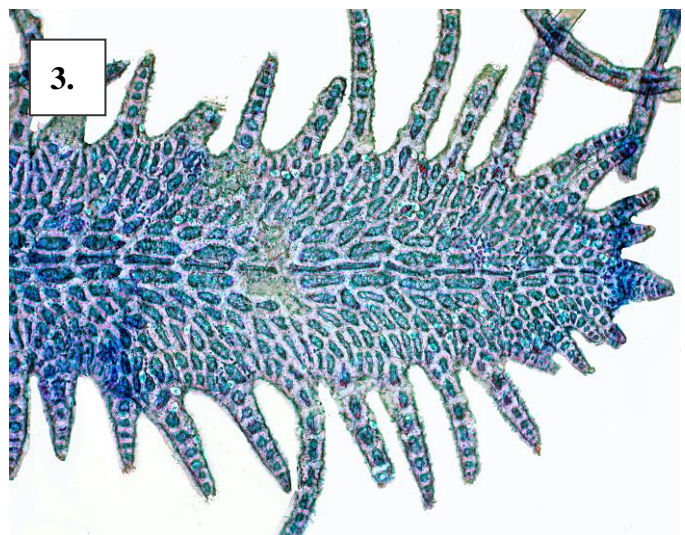
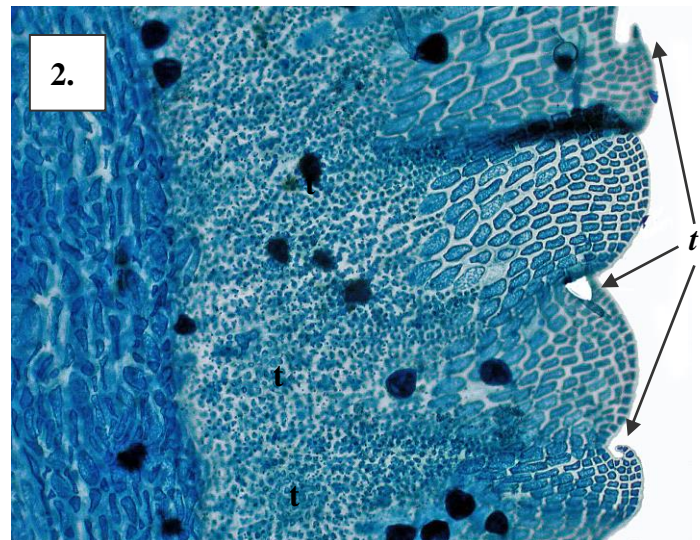
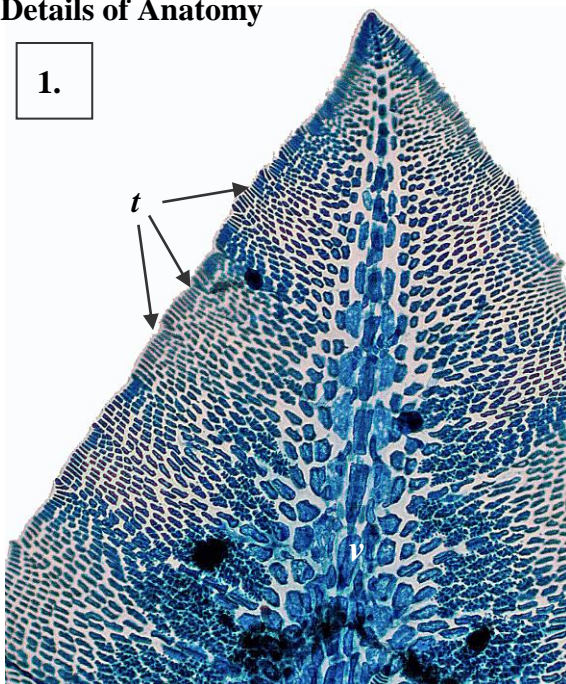
mainly from east coast Australia, but also Yorke Peninsula and Kangaroo I, S Australia

Usual Habitat

on rock or shells

Description in the Benthic Flora Part IIID , page 48-52

Details of Anatomy



Hypoglossum harveyanum stained blue and viewed microscopically

1. blade tip: midline vein (*v*), position of minute teeth (*t*) at blade edge (slide 0957)
2. detail of blade edge: upturned teeth (*t*), heavily thickened (corticated) midline vein (*v*) (slide 0957)
3. var. *fimbriata*: detail of a narrow bladelet and the threads replacing minute teeth at blade edges, characteristic of the variety (slide 6644)

4.



5.



6.



Hypoglossum harveyanum (J Agardh) Shepley & Womersley:

4, 5. from 3m deep, on shells, off Carter I., Georges R. Estuary, Botany Bay, NSW (A49090)

6. detail of branching in *Hypoglossum harveyanum* var. *fimbriatum*