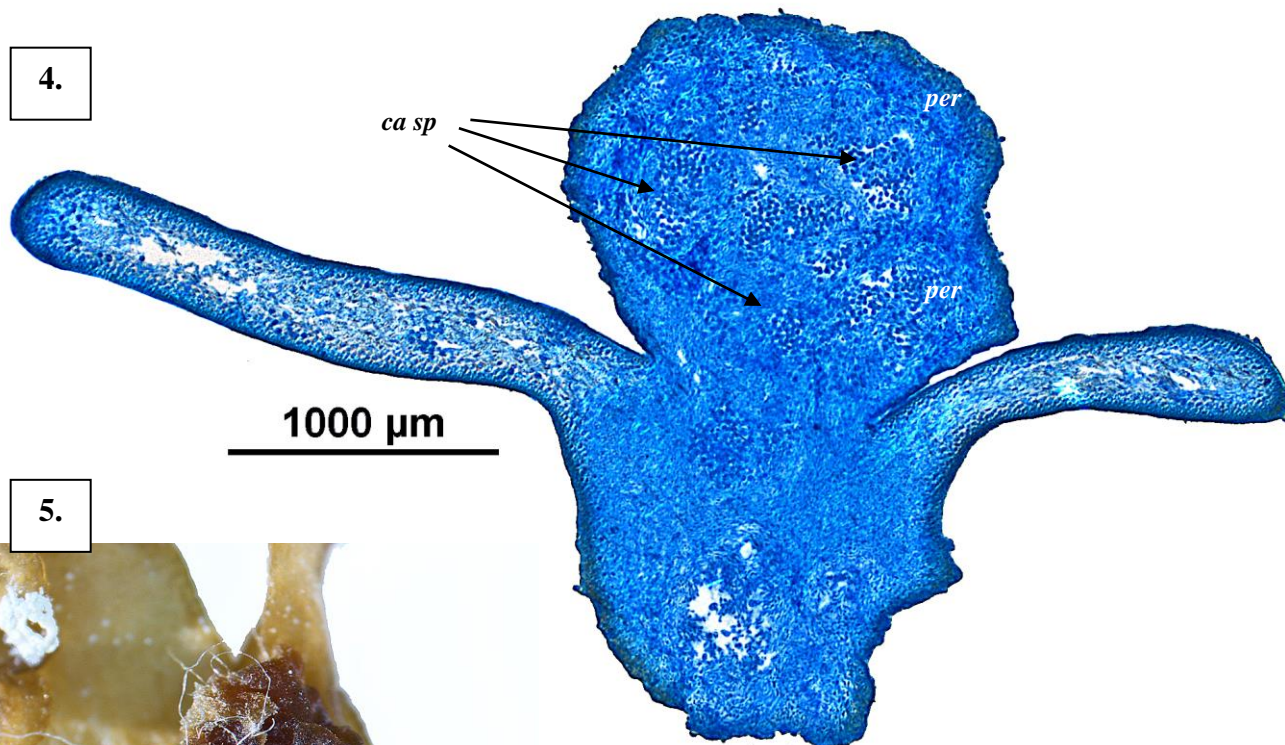






4.



5.



6.



*Hormophora australasica* J. Agardh

- 4. cross section of a blade with relatively massive, emergent cystocarp: rounded masses of carposporangia (*ca sp*); cystocarp wall (pericarp, *per*) (slide 11650)
- 5. surface view of a pressed, bleached specimen: dark, crumpled, massive cystocarp protruding from a blade
- 6. plant 15m deep, off Cape Northumberland, S. Australia (A46592): characteristic pinching of flat branches (arrowed) occurs when new branches arise from branch tips

\* Descriptive names are inventions to aid identification, and are not commonly used

“Algae revealed”, R N Baldock, State Herbarium S Australia, December 2005; additions and re-formatting April 2009, April 2014