

Techniques needed and shape



Classification

Division: Rhodophyta; Family: Delesseriaceae; Tribe: Nitophylloideae
Group: *Phycodrys*

***Descriptive name**

Toothed Cellophane Plant

Features



1. pale to dark red colour

3. wing edges *finely toothed*



2. well developed stalk and
midline *vein* with *thin* flanges
(wings) in *upper* parts, *ruffled*
at the edges

4. tetrasporangia in scattered
patches (sori) or in small *disc-
shaped bladelets* arising from
the surface of branches

Variations

flanges may be eroded, leaving only the stalk-like mid-ribs

Special requirements



1. wings are a single cell thick at first, but become many cells thick when mature

2. growth occurs from a single apical cell (difficult to locate in grazed specimens)

Usual Habitat

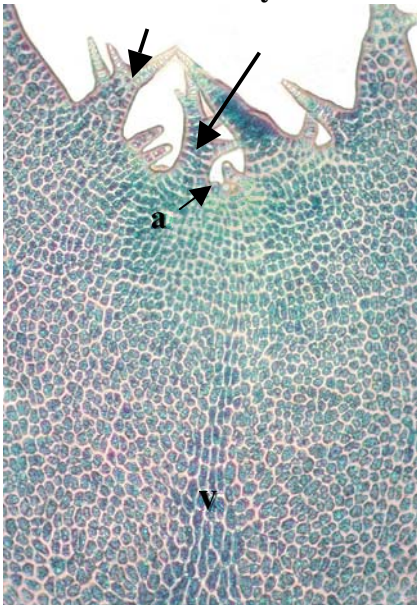
on rock, often in relatively shallow but shaded areas, from central W Australia to SE of S Australia

Similar Species

—

Description in the Benthic Flora Part IIID, page 69-71

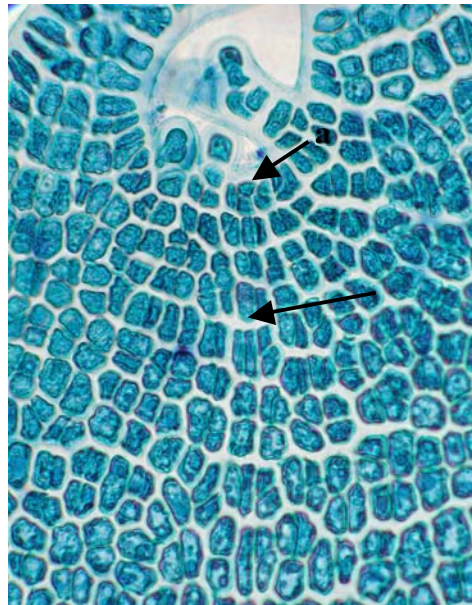
Details of Anatomy



Above:Detail of a branch tip showing the

1. apical region (a)
2. branched teeth at the edge (arrowed)
3. developing midline vein (v)

14411

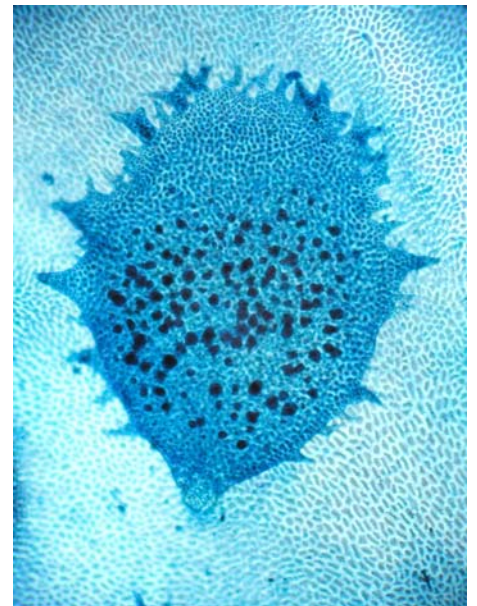


Above, centre:

Detail of the tip of a plant showing:

1. an obscure apical cell (a)
2. a filament of cells that becomes the midline vein (arrowed)

14441



Above: View of a winged section of a branch showing a disc-shaped bladelet bearing tetrasporangia arising from the surface 19125



Above, right:

Section across a branch showing the margin 1-celled thick. The central region is many-cells thick and tetrasporangia are developing in patches

17894



Heterodoxia denticulata

A6876a Vivonne Bay
KANGAROO IS.
Cast up.



Heterodoxia denticulata (Kuntze) J Agardh,
A30967, a drift plant from Seal Bay,
Kangaroo I., S. Australia

* Descriptive names are inventions to aid identification, and are not commonly used
Prepared March 2003; additions August 2007