

Techniques needed and plant shape



filament

MICRO
PLANT



flat-branched

Classification

Phylum: Rhodophyta; Order: Ceramiales; Family: Ceramiaceae;
Tribe: Pterothamnieae

*Descriptive name

red micro comb-weed

Features

Special requirements



plants dark red-brown, flat-branched, comb-like, about 20mm tall
view microscopically to find main branches (axes) of **large**, naked (**uncorticated**)
cells, side branches comb-like – **opposite** and in **one plane** with some short
branchlets, a few cells long on the upper (**adaxial**) side of the first 2-5 cells

Occurrences

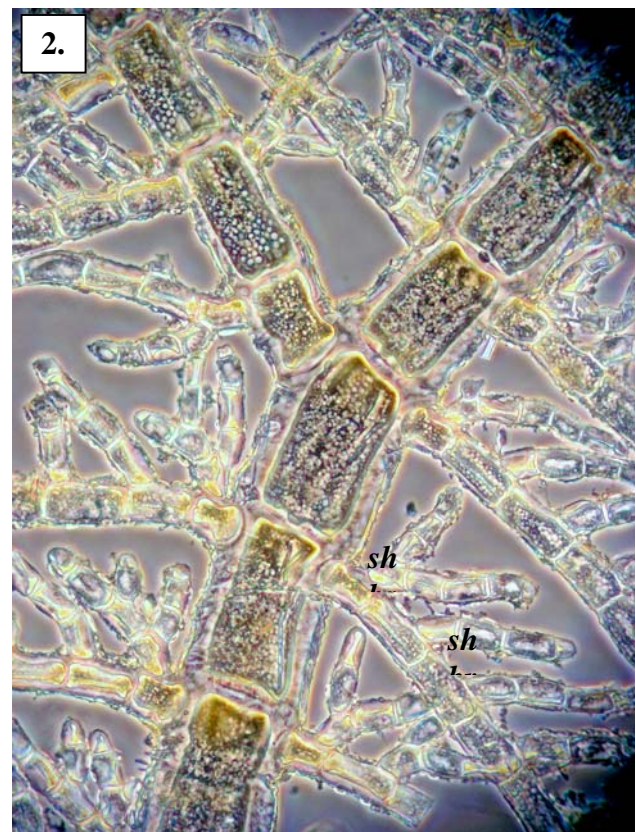
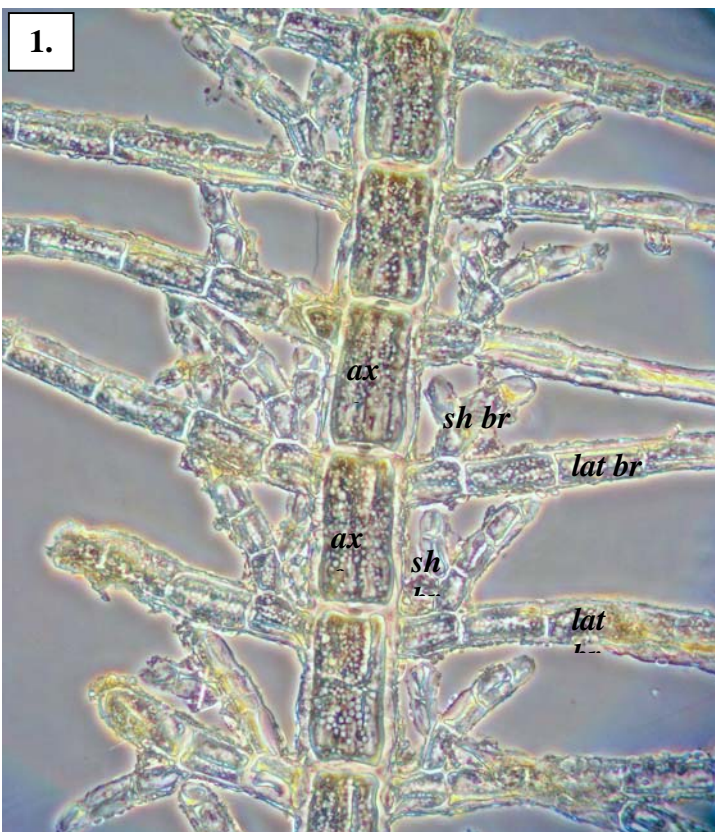
Usual Habitat

from an 1892 collection of sterile plants from Port Phillip Heads, Victoria
not known

Similar Species

vegetatively similar to *Gymnothamnion elegans*, but that species has **narrower**
threads and side branches have **longer** branchlets throughout their length on **both**
sides

Description in the Benthic Flora Part IIIC, pages 131, 132
Details of Anatomy

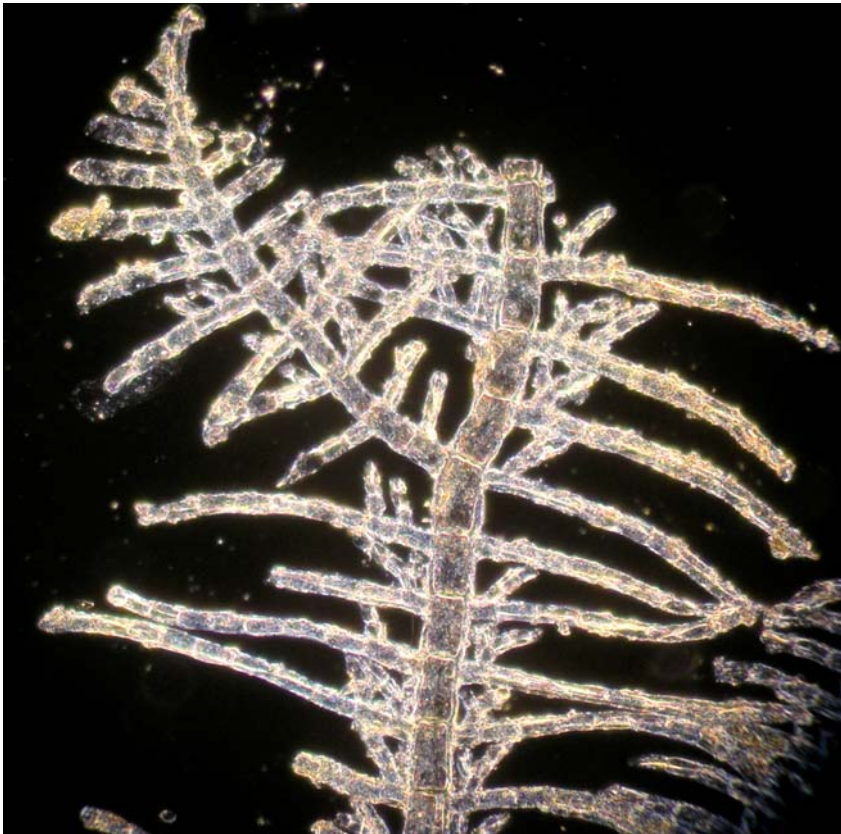


1, 2. A piece of *Gymnothamnion nigrescens* removed from the type specimen (A18386 slide 1399) and viewed microscopically at different magnifications showing the branching pattern – axial cell, *ax c*; opposite side branches (*lat br*); short branchlets (*sh br*) on the upper, adaxial side of side branches).

3.



4.



3. *Gymnothamnion nigrescens* J Agardh) Athanasiadis A18386. Portion of the type specimen on a piece of mica
4. specimen (A18386 slide 1399) viewed using dark field microscopy emphasizing the branching pattern,