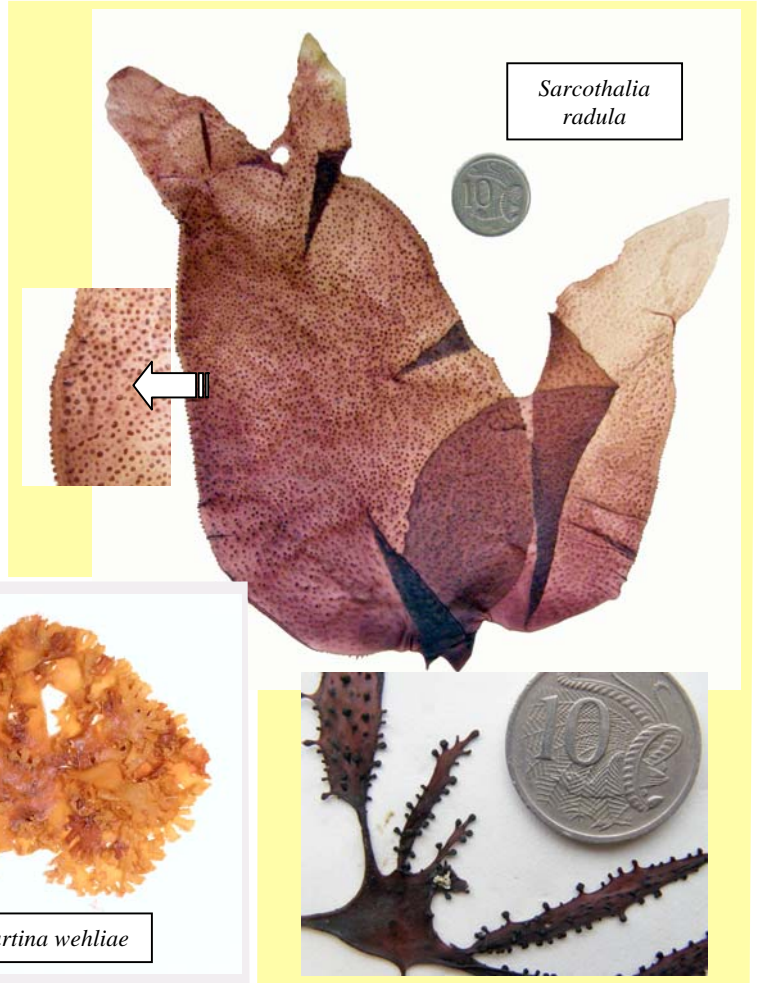


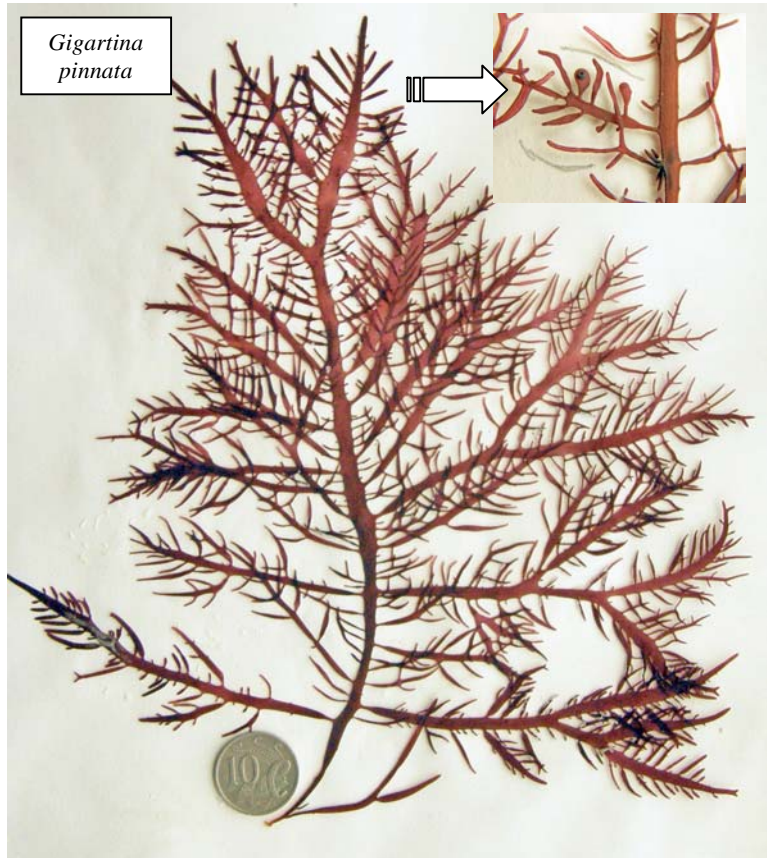
SPECIES OF GIGARTINACEAE AT A GLANCE

(images with black backgrounds are microscope images: genera are separated on reproductive criteria)

I. PLANTS ARE FOLIOSE; BLADES IRREGULARLY LOBED OR FORKED



II. MAIN AXES ARE BROAD; BRANCHING IS PINNATE



III. NARROWER BRANCHES, OFTEN CYLINDRICAL

