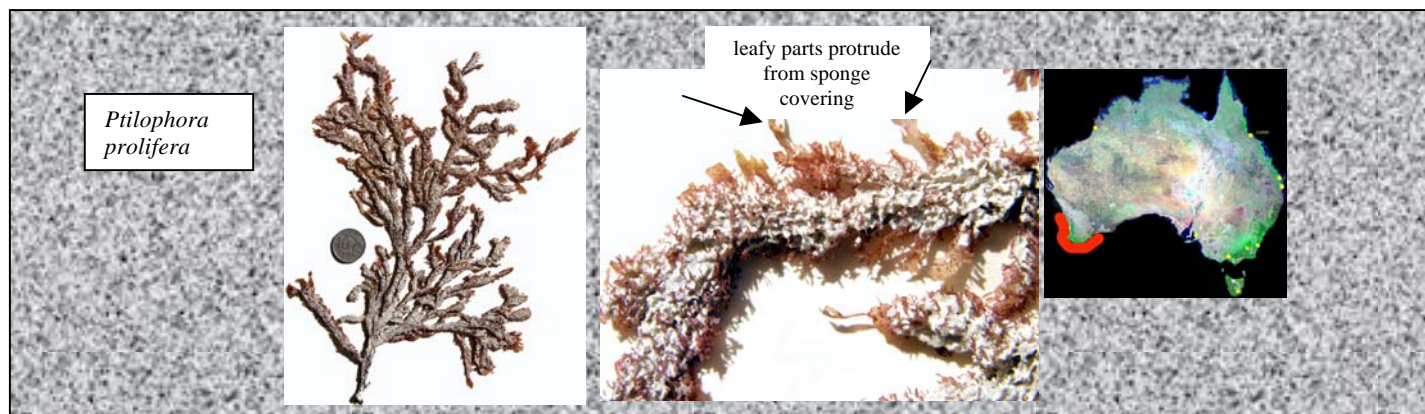


# SOUTHERN AUSTRALIAN SPECIES OF *GELIDIACEAE* AT A GLANCE

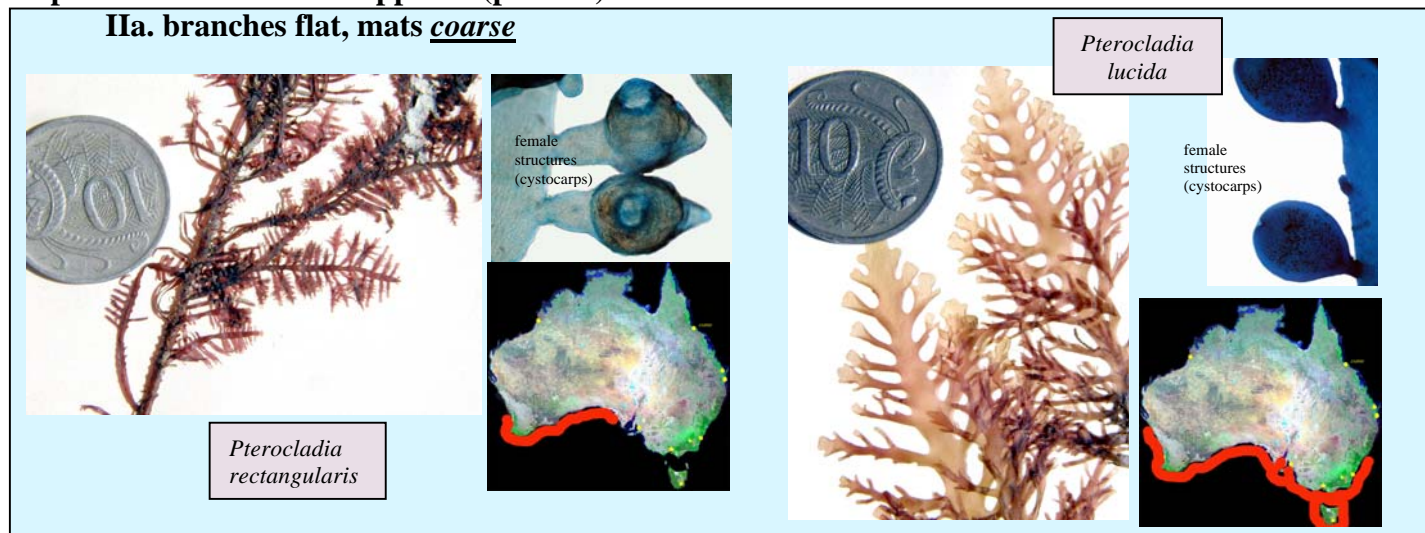
(microscopic details are stained blue; genera are separated on reproductive criteria)

## I. plant mixed with sponge

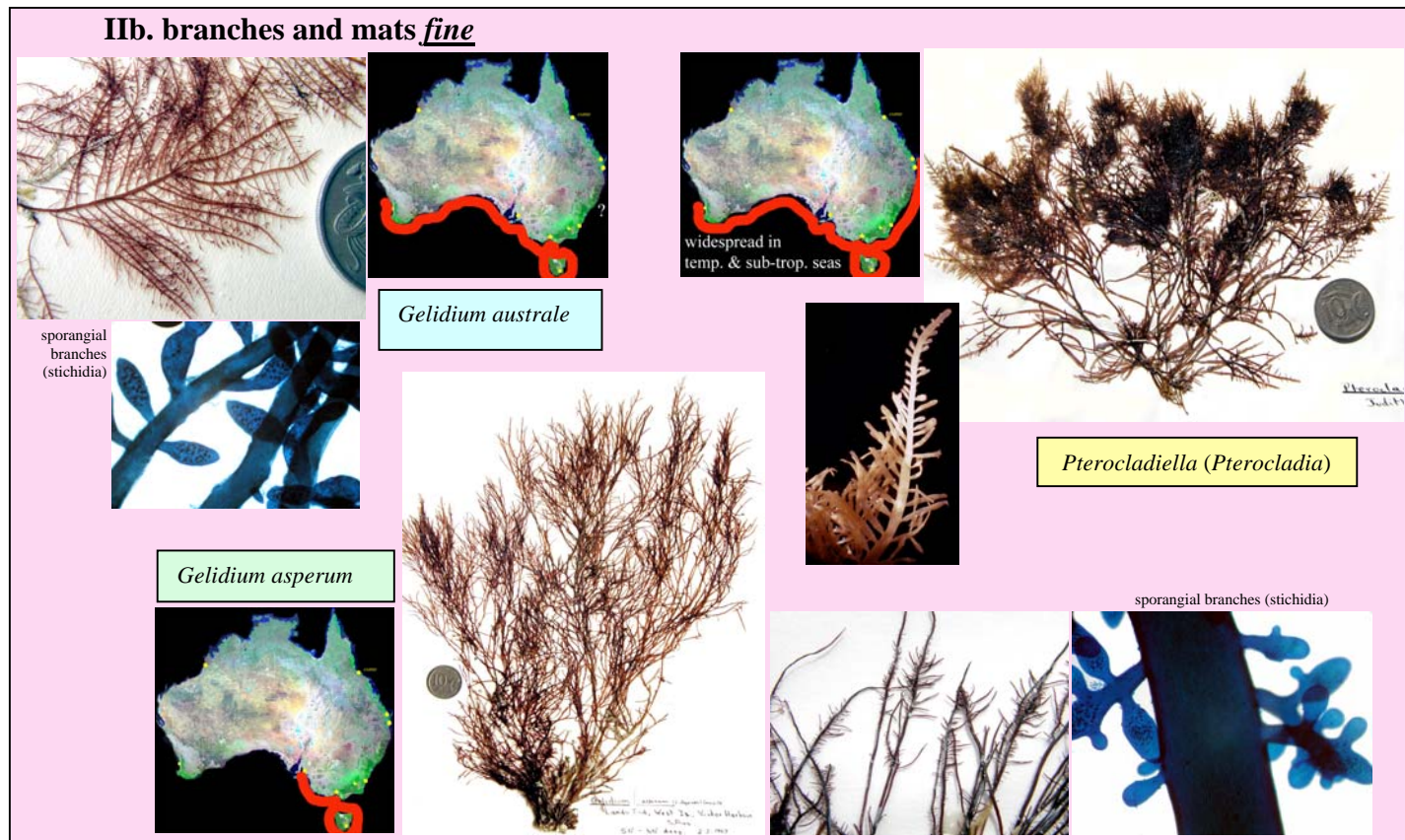


## II. plants form mats with opposite (pinnate) branches

### IIa. branches flat, mats coarse




### IIb. branches and mats fine



III. plants form low turfs, branches mainly cylindrical, sometimes compressed

*Capreolia implexa*






branch tips

branches with sporangia

New Zealand

*Gelidiella ramellosa*

branches with sporangia





"W Australia"

rare

*Gelidiella antipai*

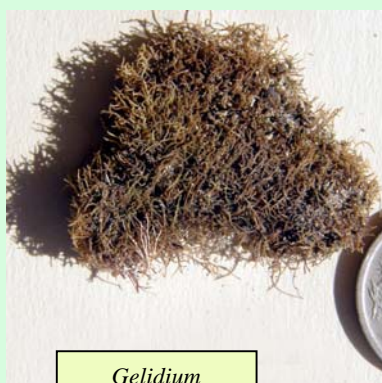

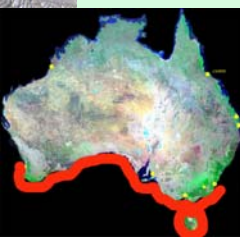




Romania, Mediterranean, Baja California, S Africa



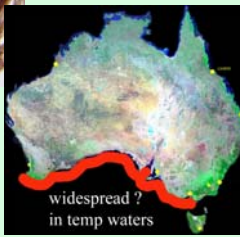
*Gelidium pusillum*

erect parts compressed

*Gelidium crinale*



erect parts cylindrical


widespread ? in temp waters

IV plants consist of tiny, star-shaped tufts, on dead shells and encrusting coralline algae

*Pterocliadiella (Gelidiella) minima*

tufts arise from runners



sporangia in rows

