

CYSTOPHORA SPECIES AT A GLANCE

R N Baldock, State Herbarium of S Australia with help from F Scott, University of Tasmania



I. ULTIMATE BRANCHES (ramuli) OBVIOUSLY FLAT-BRANCHED



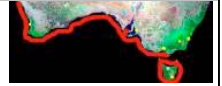
C. brownii



C. cuspidata



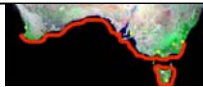
C. grevillei



C. monilifera



C. moniliformis



C. pectinata



C. platylobium



C. racemosa



C. retorta



C. retroflexa



C. siliquosa



ULTIMATE BRANCHES (ramuli) RADIALY OR IRREGULARLY BRANCHED

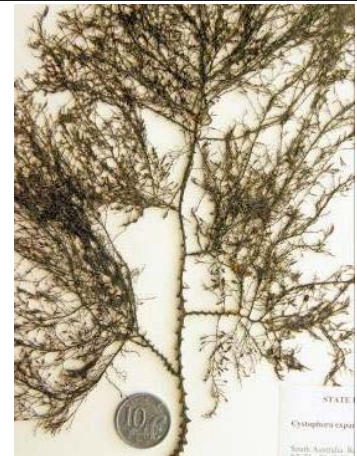


C. congesta

C. cymodoceae



C. botryocystis



C. harveyi

C. gracilis

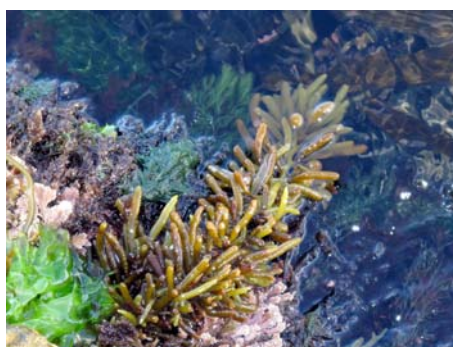
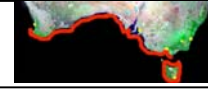
C. expansa



C. intermedia

C. subfarcinata

C. polycystidea



C. tenuis

C. torulosa

C. xiphocarpa

