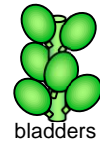




MACRO  
PLANT



Techniques needed and plant shape

Classification

Phylum: Chlorophyta; Order: Bryopsidales; Family: Caulerpaceae

\*Descriptive name

glistening Caulerpa; §simple-branched caulerpa

Features

1. plants green to dark green, 80-300mm tall
2. upright, narrow, cylindrical branches, occasionally forked arise from a runner
3. numerous, tiny **droplet-like** ultimate branches (vesiculate ramuli) give upright branches (axes) a glistening appearance when fresh

Variations



often the surface is **coated with pink** encrusting red algae such as *Melobesia membranacea*.  
In the variety *laxa* the vesicles can be **slightly separated**

Special requirements



view the **club-shaped** bladders about 500µm wide, **pinched at the base**

Occurrences

Usual Habitat

from W Australia through southern Australia and Tasmania  
in rock pools and shallow water to 25m deep on rough water coasts

Similar Species

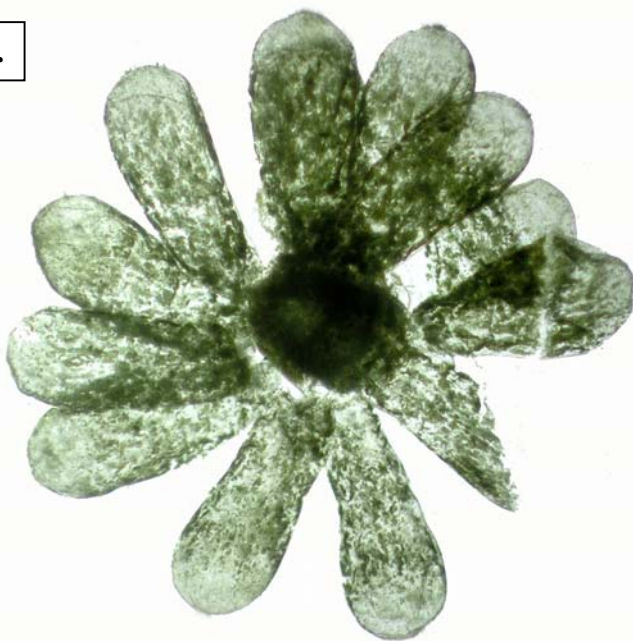
§ *C. vesiculifera* has small vesicles but these are attached to the upright branch by a noticeable shoulder in that species

Description in the Benthic Flora

Part I, pages 271-274

Details of Anatomy

2.



1.



Microscope views of *Caulerpa simpliciuscula* from S Australia

1. near the tip of an upright branch showing the droplet-like ultimate branches, closely packed in var. *vesiculifera*
2. cross section showing features separating this from similar species such as *C. vesiculifera*:-
  - the **many** (8-14) egg-shaped vesicles arising centrifugally from the branch
  - **absence** of a noticeable shoulder at the point of attachment

\* Descriptive names are inventions to aid identification, and are not commonly used

§ name used in Edgar, G. *Australian Marine Life, 2nd Ed.* (2008)

“Algae Revealed” R N Baldock, S Australian State Herbarium, August 2005



3, 4. Two magnifications of *Caulerpa simpliciuscula* var. *simpliciuscula* (R. Brown ex Turner) C. Agardh (A32488), from Elliston, S. Australia.

Note the *closely-packed* minute vesicles in the lower image

\* Descriptive names are inventions to aid identification, and are not commonly used  
‡ name used in Edgar, G. *Australian Marine Life*, 2nd Ed. (2008)  
“Algae Revealed” R N Baldock, S Australian State Herbarium, August 2005



*Caulerpa simpliciuscula* Ag.  
 var. *vesiculifera* Harv. Pig Is., Pelican Lagoon  
 KANGAROO IS.



- 5, 6. *Caulerpa simpliciuscula* var. *laxa* Womersley  
 5. from Elliston, S. Australia (A32488). Note the **loosely-packed** vesicles  
 6. magnified view of a preserved (bleached) and coloured specimen of *Caulerpa simpliciuscula* var. *laxa* (A26922), from American R. inlet, Kangaroo I., S Australia showing the egg-shaped vesicles of an upright branch. The vesicles are not tightly packed in this variety.

\* Descriptive names are inventions to aid identification, and are not commonly used  
 † name used in Edgar, G. *Australian Marine Life*, 2nd Ed. (2008)  
 "Algae Revealed" R N Baldock, S Australian State Herbarium, August 2005