



Techniques needed and plant shape

Classification

Phylum: Chlorophyta; Order: Bryopsidales; Family: Caulerpaceae

***Descriptive name**

herring-bone caulerpa; §sawtooth caulerpa

Features

1. plant green, 150-300mm tall
2. upright branches (axes) arise from a *slender, naked* runner
3. ultimate branches (ramuli) *flat* and widest at their *base, alternate* along 2 sides of upright branches and are separated by *more* than their width apart

Variations

flat, ultimate branches (ramuli) may be scattered or missing on parts of the upright branches (axes).
Axes may branch 1-2 times

Special requirements



note that *flat* ultimate branches (ramuli) *alternating* along opposite sides of upright branches (axes) are separated by *more* than their width apart

Occurrences

from Kangaroo I. and Gulf St Vincent, S. Australia to Victoria and Tasmania.

Usual Habitat

confined to sheltered inlets, from 0-15m deep

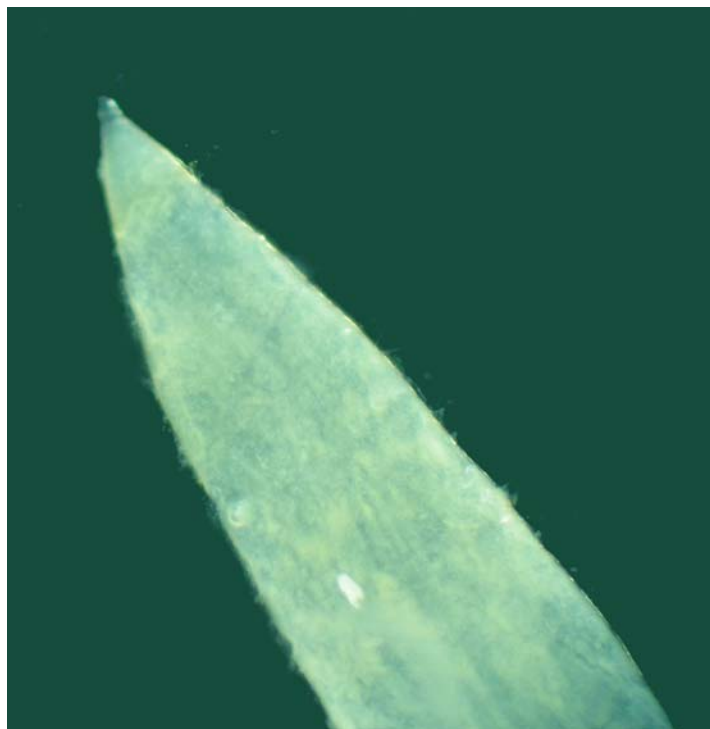
Similar Species

Caulerpa scalpelliformis, *C. ellistoniae* and *C. distichophylla* especially forms with ramuli irregularly spaced

Description in the Benthic Flora Part I, pages 256-257, 259

Details of Anatomy

Two views at different magnifications of a preserved, bleached specimen of *Caulerpa remotifolia* (A5802), from Pelican Lagoon, Kangaroo I., S. Australia, showing the flat, alternating ramuli arising in 2 rows along the upright branches (axes), tapering to a short point



* Descriptive names are inventions to aid identification, and are not commonly used

§ name used in Edgar, G. *Australian Marine Life, 2nd Ed.* (2008)

“Algae Revealed” R N Baldock, S Australian State Herbarium August 2005



Cau

Caulerpa remotifolia Sonder, (A55818),
Pelican Lagoon, Kangaroo I., S. Australia



* Descriptive names are inventions to aid identification, and are not commonly used
‡ name used in Edgar, G. *Australian Marine Life, 2nd Ed.* (2008)
“Algae Revealed” R N Baldock, S Australian State Herbarium August 2005