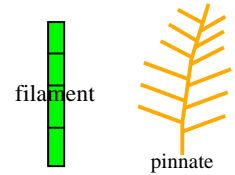


Bryopsis plumosa
(Hudson) C. Agardh



MACRO
PLANT



50.670

Techniques needed and shape

Classification

Phylum: Chlorophyta; Order: Bryopsidales; Family: Bryopsidaceae

***Descriptive name**

green plumes

Features

1. plants bright green, 20 –250mm tall, branches spreading
2. many upright stalks (axes) arise from basal branching rhizoids
3. side branches and ultimate branches (ramuli) are thin, long and arranged *in 2 rows* in one flat surface (*pinnately*)

Variations



plants can be robust or delicate.

Branching may be definitely pinnate only near branch tips

Special requirements:



1. view the rarely-divided (*coenocytic*) filaments microscopically
2. measure the main stalks (axes): they should be about **0.3 – 1.0mm** across
3. view the ramuli near the stalk *tips* to see the characteristic *pinnate* arrangement

Occurrences

Usual Habitat

from Rottnest I., W. Australia and S. Australia to Port Phillip, Victoria
on rock in intertidal pools or shallow water of sheltered localities

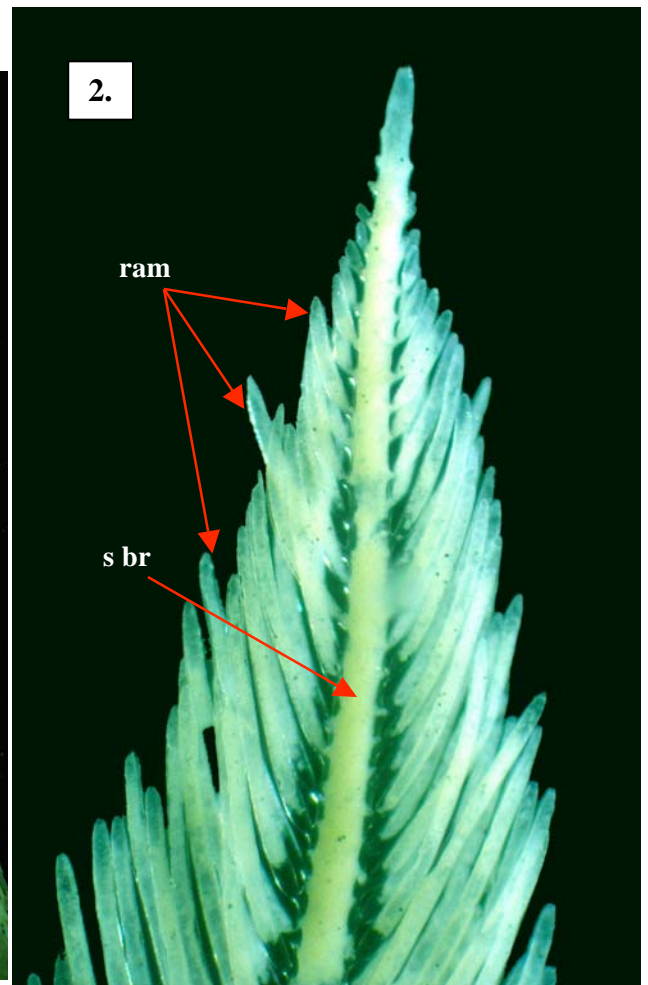
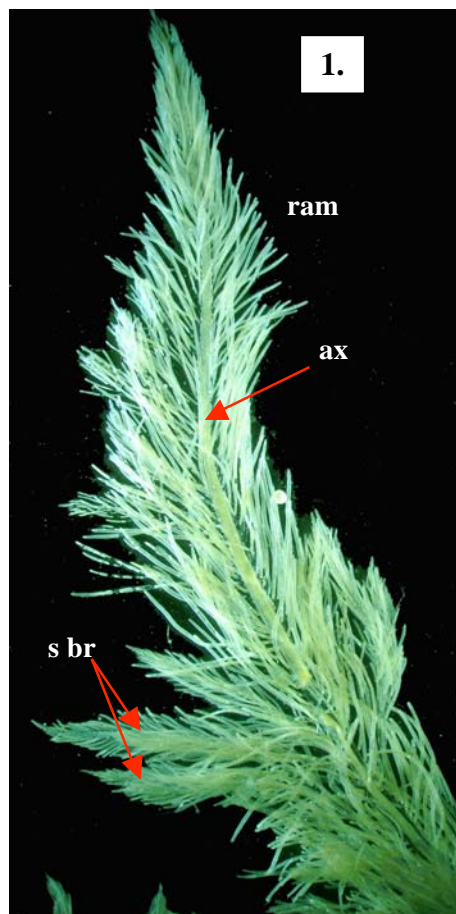
Similar Species

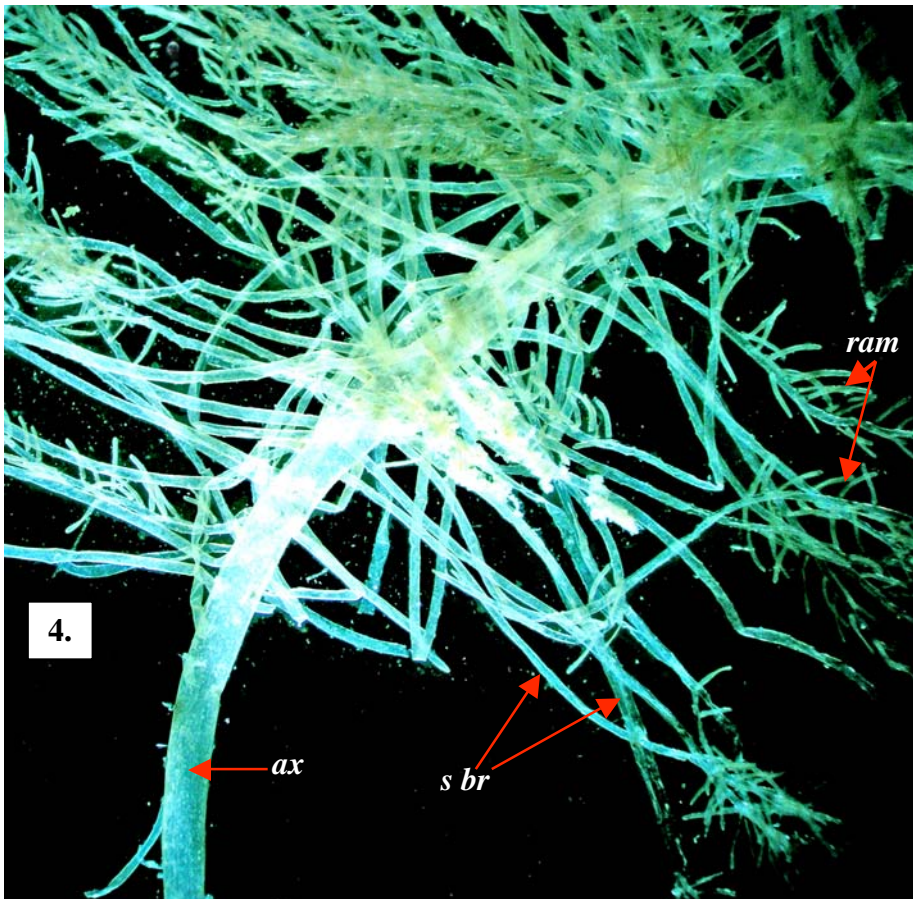
Description in the Benthic Flora Part I, pages 282-285

Details of Anatomy

Preserved (bleached) and coloured specimens from Waterloo Bay, West coast S. Australia (A53137)

1. dense branching along the upper part of a main stalk (axis, *ax*). Side branches (*s br*) and ultimate branches (ramuli, *ram*) arise in 2 rows although this becomes difficult to see moving down the stalk
2. flat two-sided (pinnate) branching of ramuli at a branch tip





Specimens of *Bryopsis plumosa* (Hudson) C. Agardh from S Australia

3. a pressed plant from Robe (A43931) showing the characteristic feathery (plumose) branching pattern
4. a preserved (bleached) and coloured plant (A53137) from Waterloo Bay viewed near a stalk (axis) base. Numerous long side branches (*s br*) are visible, with ultimate branches (ramuli, *ram*) near their tips. The flat 2-sided (pinnate) branching can be difficult to see in the mass of threads

* Descriptive names are inventions to aid identification, and are not commonly used
 "Algae Revealed" R N Baldock, S Australian State Herbarium, July 2005