

**Techniques needed and plant shape**



WARNING:  
diagnosis of this  
feature is best  
left to experts



MICRO  
PLANT



epiphyte



filament

**Classification**

Phylum: Rhodophyta; Order: Acrochaetiales; Family: Acrochaetiaceae

**\*Descriptive name**

*Delisea hypnoides* fuzs

**Features**

plants consist of *microscopic* threads on the surface of *Delisea hypnoides*

**Special requirements**



WARNING:  
diagnosis of this  
feature is best  
left to experts



scan the surface of *Delisea hypnoides* under the microscope to find

- single threads of cylindrical cells standing out from the host plant, some branched, some ending in extremely fine, colourless hairs (filaments), attached to the host by a single cell.
- rows of stalkless, egg-shaped spores (monosporangia) on some filaments.

**Occurrences**

only known from Cape du Couedic, Kangaroo I., S. Australia, possibly more common, but overlooked because of its diminutive nature

**Usual Habitat**

on *Delisea hypnoides*

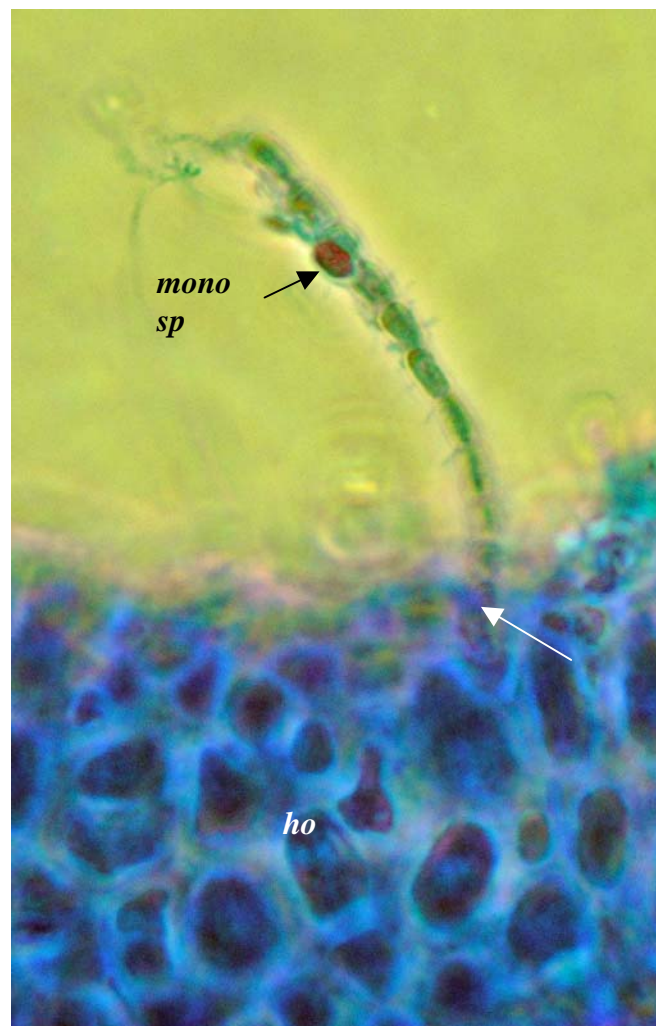
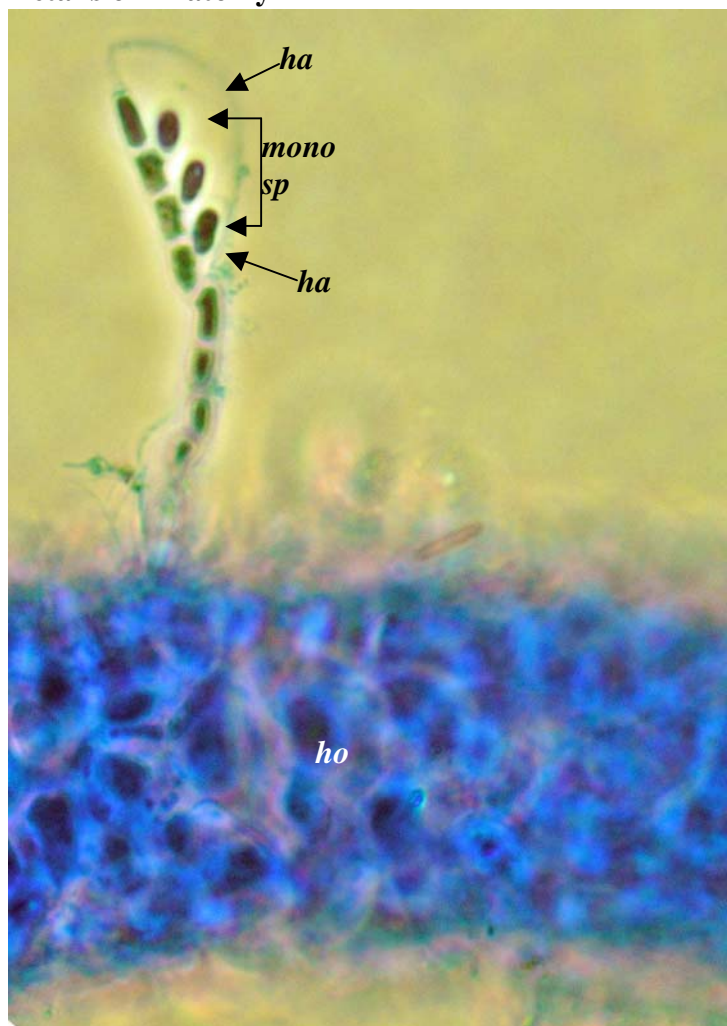
**Similar Species**

other *Audouinella* species, but *A. nakamurae* is small, with a unicellular base.

**Description in the Benthic Flora**

Part IIIA, pages 61-63

**Details of Anatomy**



*Audouinella nakamurae* (Woelkerling) Garbary, (A19847, slide 050), on *Delisea hypnoides*, (host, *ho*) stained blue and viewed microscopically.

1. whole plant of a branched thread with terminal hairs (*ha*), and row of stalkless monosporangia (*mono sp*)
2. separate plant with single monosporangium (*mono sp*). The basal cell of the thread (arrowed) is single and equal in size to other filament cells